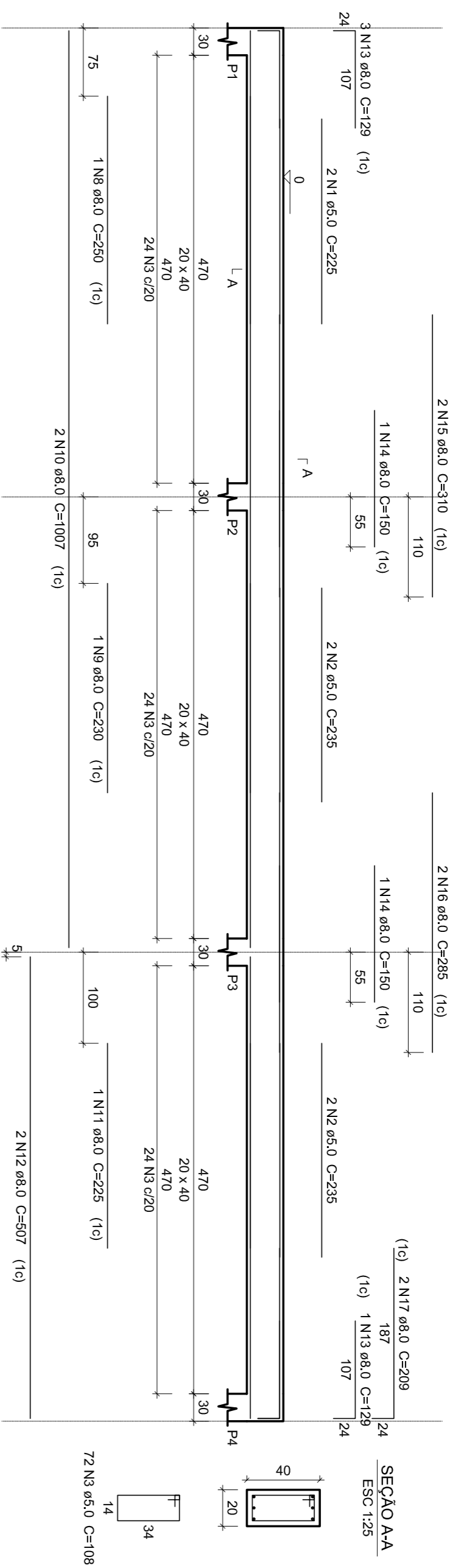


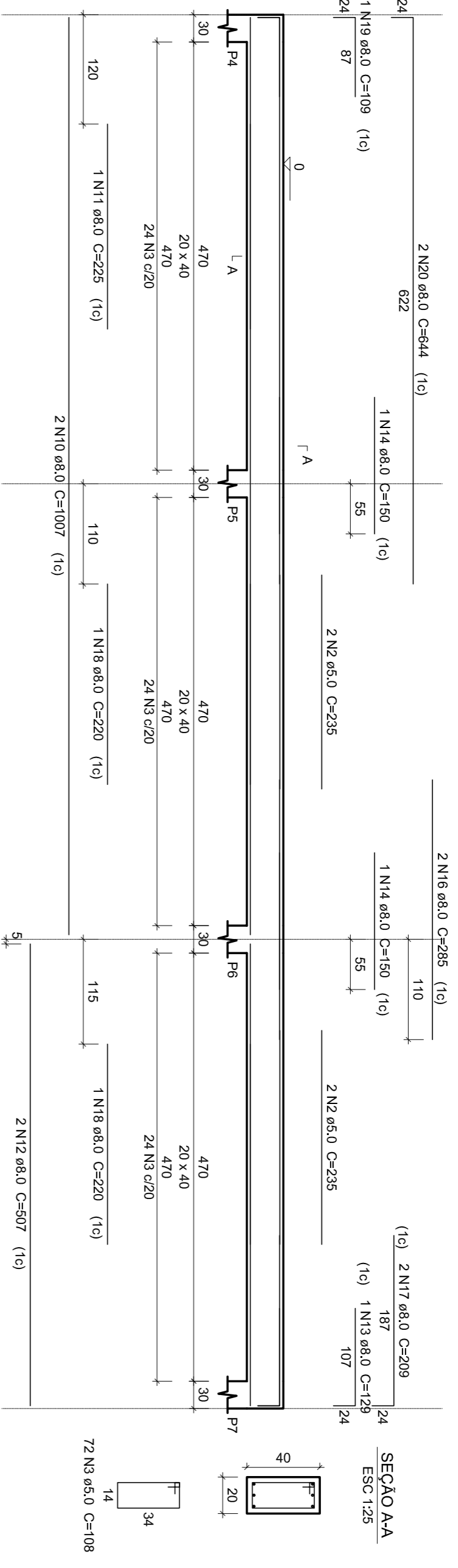
V1

ESC: 1:50



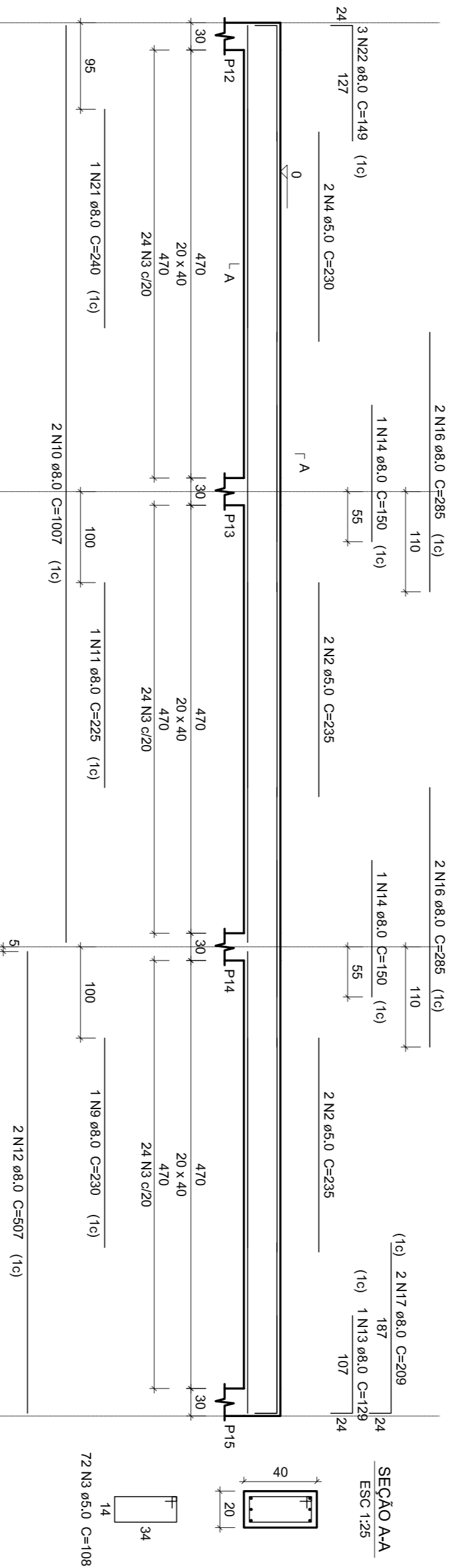
V2

ESC: 1:30



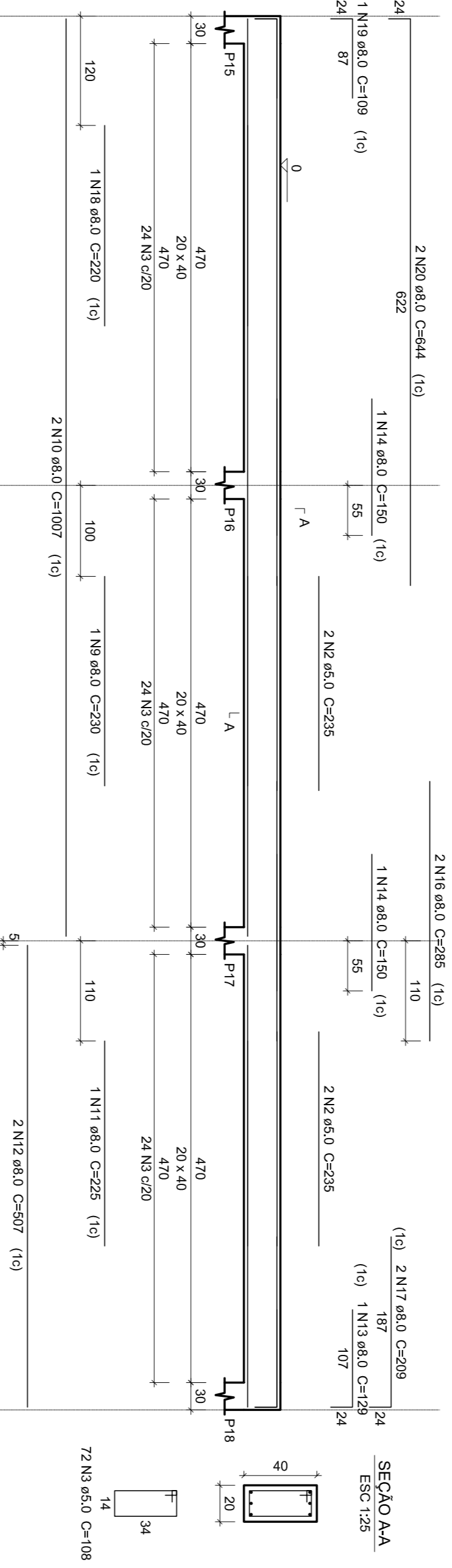
V3

ESC: 1:50



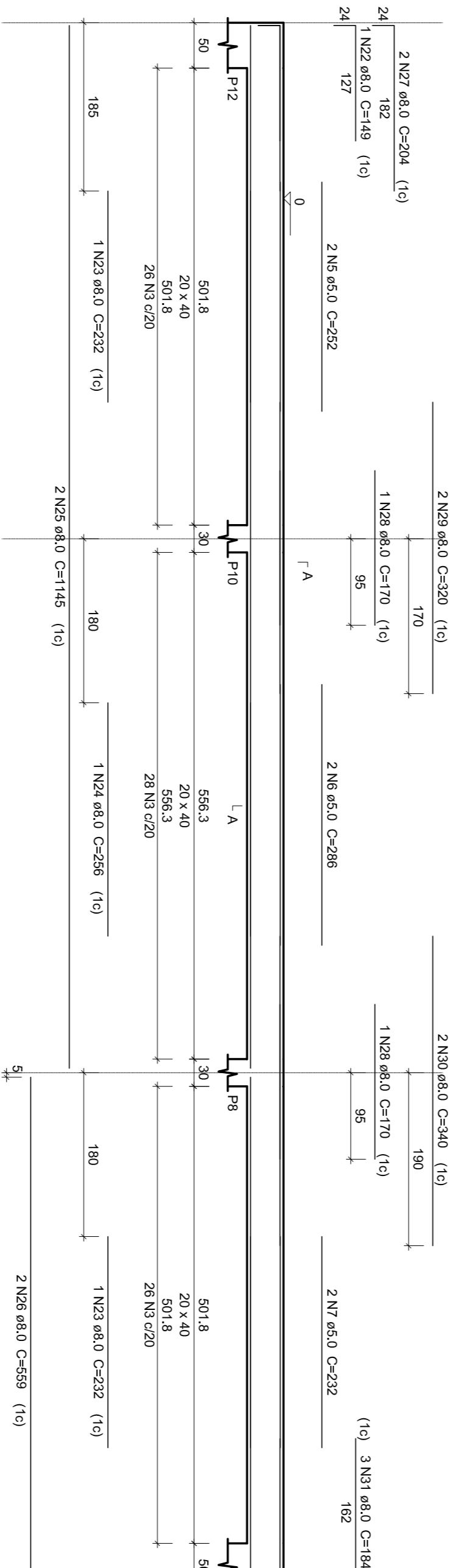
V4

ESC: 1:50



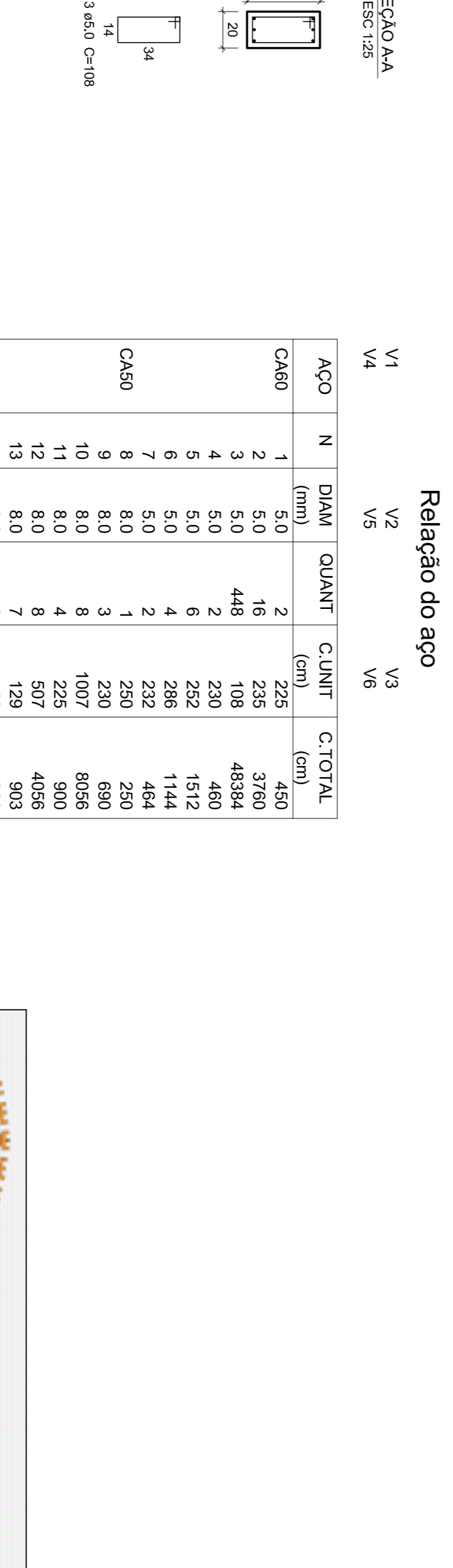
V5

ESC: 1:50



V6

ESC: 1:50



Relação do aço

ACO	N	DIAM (mm)	QUANT	C.UNIT (cm)	C.TOTAL (cm)
CA50	1	5,0	2	225	450
	2	5,0	16	235	3780
	3	5,0	446	108	48384
	4	5,0	230	6	480
	5	5,0	232	2	1512
	6	5,0	286	2	1144
	7	5,0	232	2	464
	8	8,0	250	1	250
	9	8,0	230	3	690
	10	8,0	1007	8	8056
CA60	1	8,0	4	225	900
	2	8,0	129	507	4056
	3	8,0	7	129	903
	4	8,0	8	129	1032
	5	8,0	2	150	1200
	6	8,0	4	310	620
	7	8,0	2	150	620
	8	8,0	10	285	2850
	9	8,0	8	209	1672
	10	8,0	3	220	660
CA80	1	8,0	2	109	218
	2	8,0	4	644	2576
	3	8,0	1	240	240
	4	8,0	5	149	745
	5	8,0	3	232	696
	6	8,0	1	256	256
	7	8,0	4	1145	4580
	8	8,0	26	2236	5896
	9	8,0	27	204	816
	10	8,0	28	170	510
CA90	1	8,0	2	320	1920
	2	8,0	6	340	680
	3	8,0	2	184	1104
	4	8,0	6	251	1506
	5	8,0	1	237	237
	6	8,0	1	165	165

Resumo do aço

ACO	DIAM (mm)	C.TOTAL (m)	PESO + 10% (kg)
CA50	8,0	390,9	169,7
CA60	5,0	561,8	95,2
PESO TOTAL (kg)			264,9
CA50	8,0	169,7	95,2
CA60	5,0	561,8	95,2

Volume de concreto (C-25) = 7,65 m³
Área de forma = 35,6 m²



PROJETO ESTRUTURAL DA COBERTURA DE QUADRA NO POVOADO DE SANTA RITA
MUNICÍPIO - UF: SÃO JOÃO DA PONTE - MG
PROPRIETÁRIO: MUNICÍPIO DE SÃO JOÃO DA PONTE
ENDEREÇO: POVOADO DE SANTA RITA

PROPRIETÁRIO/PREFEITURA DE SÃO JOÃO DA PONTE

ENGENHEIRO CIVIL AUSSON GUSMÃO CORDEIRO GREA- 167.936/D

PROJETO ESTRUTURAL	ESCALA:	EST
		FRANCHA
		01/02